



*General Information*

# HTM-920, 921

## Vibration Type Level Switch





HITROL HTM silo Size 가  
Sensor . 가 , HTM-921  
HTM-920 가



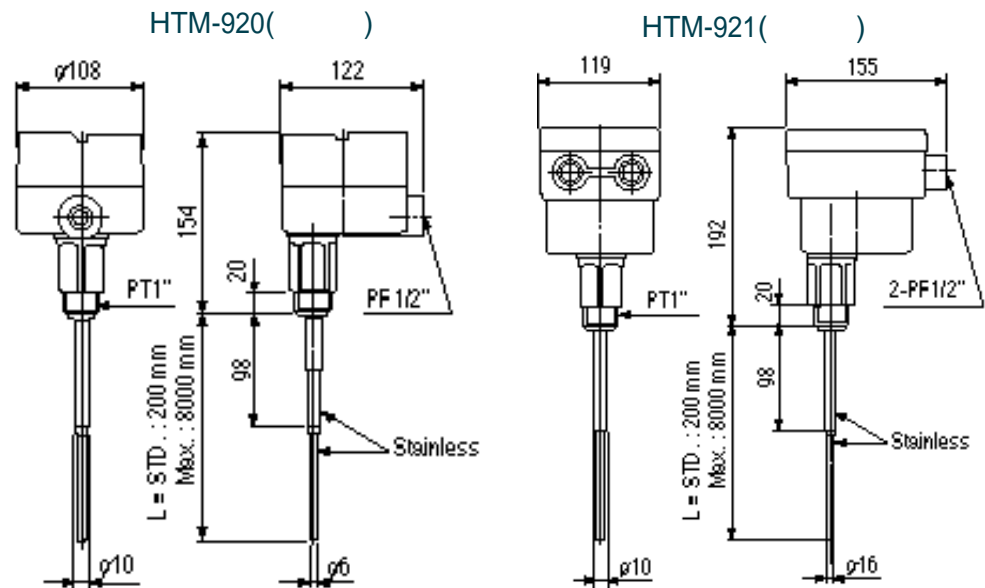
HITROL HTM 가  
HTM Head Module  
Module 가  
Module 가  
가



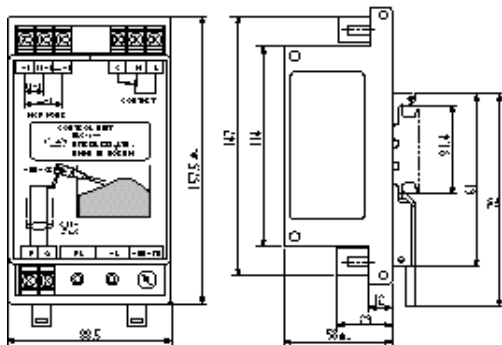
Model	HTM-921( )	HTM-920( )
		IP 65
		-20 ~ +60
		SUS 304
		PT 1 "(KS B0222)
( )		-20 ~ +80
		10 kg/cm <sup>2</sup>
		HLC-900(Panel ), HLC-900L(Local
		AC 110 V / 220 V 60 Hz ± 10 %
		5 VA
		0.6
	AC 250 V 5 A	DC 28 V 5 A ( 1/SPDT)
	ON	LED ON, LED , LED
		Color
		500 m
	가	(CVVS 2C)



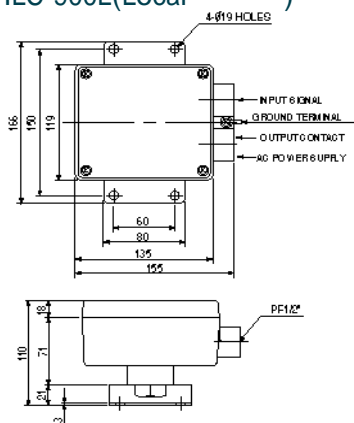
\* . \* 가  
\* . \*



HLC-900(Panel )



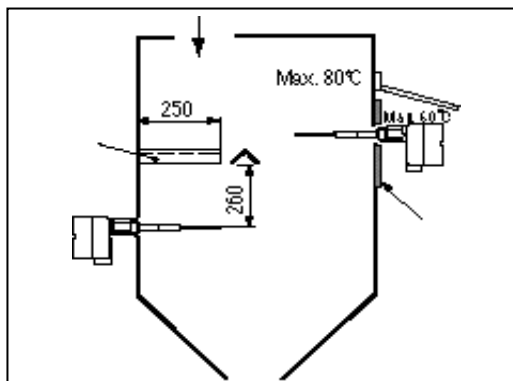
HLC-900L(Local )



1. PT 1 "

2.

3.



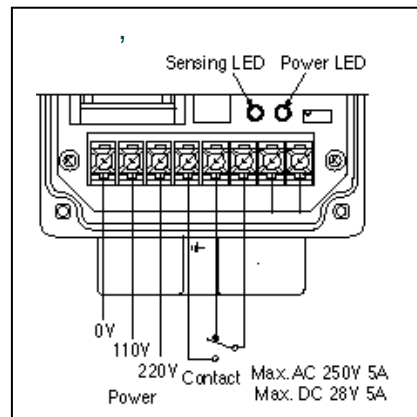
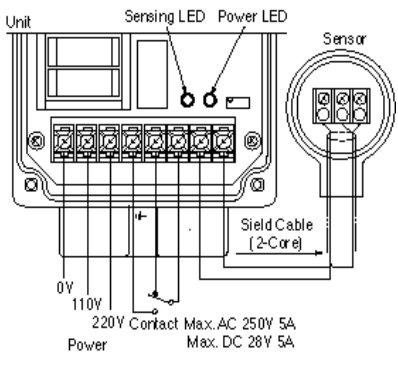
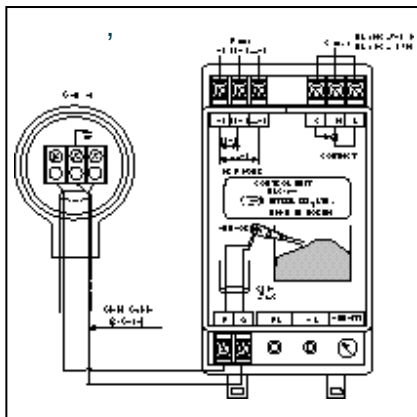
1.

2.

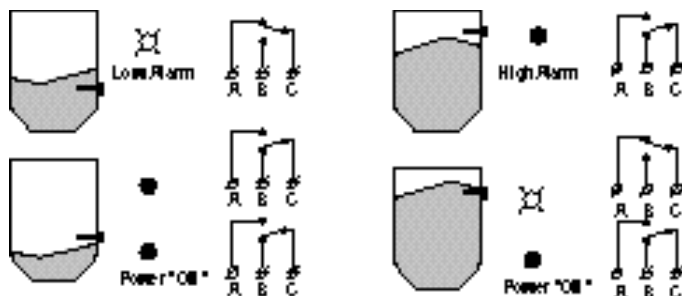
3.

4.

가

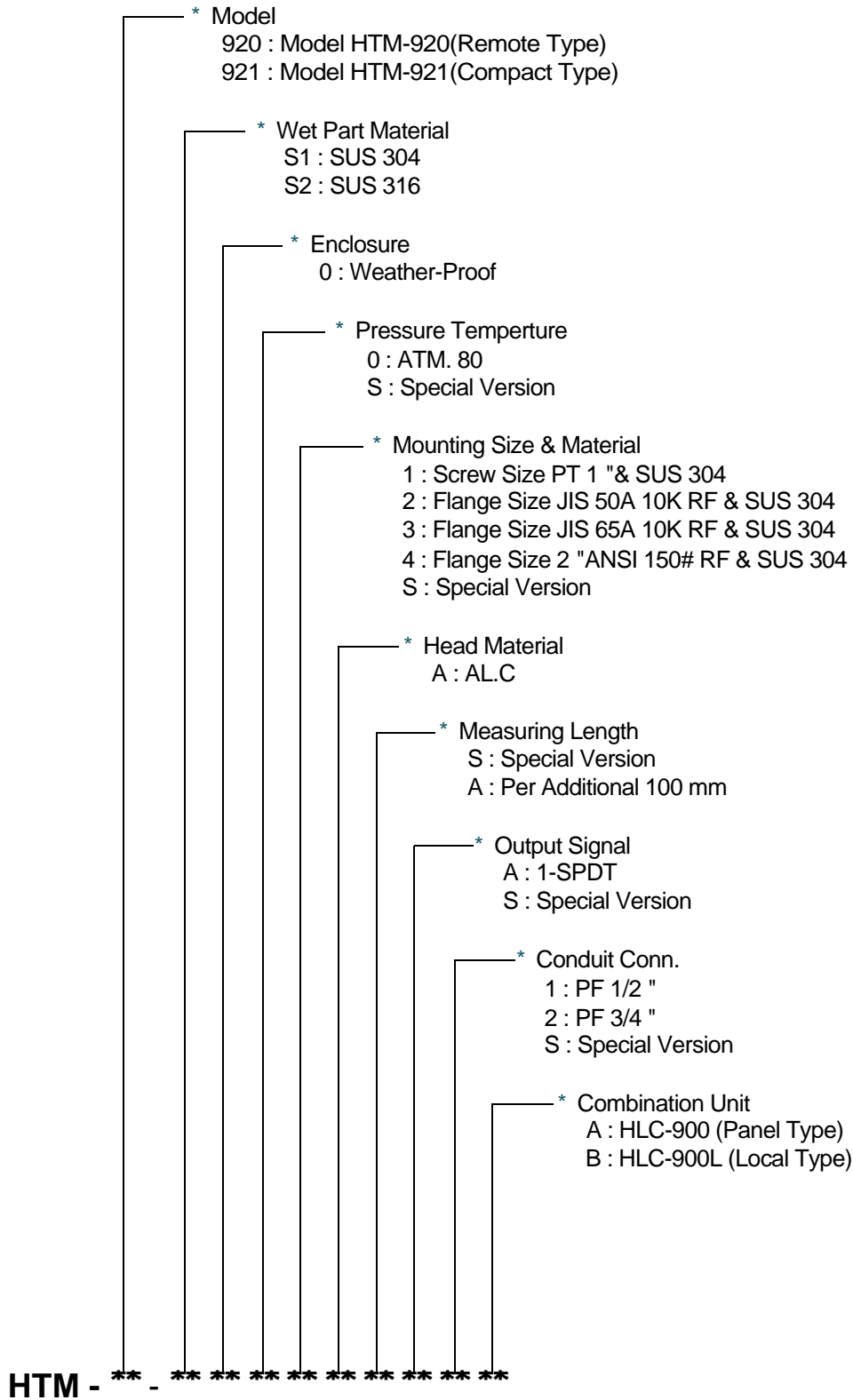


가



가

## ORDER CODES



62-182

: (031) 943-0875~7 02-744-9922

: (031) 943-0878, 5600

<http://www.hitrol.co.kr> hitrol@hitrol.co.kr